

DESIGNED FOR A  
**WIDE RANGE  
OF USERS**

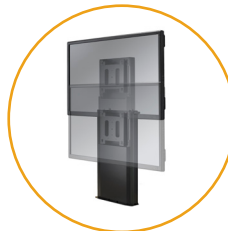
Chief's Electric Height Adjust Flat Panel Solutions are perfect for corporate and education applications, providing increased accessibility to interactive technology. The mounts can be controlled via the control panel or remote control so that a wide array of people can easily leverage the technology.



**CABLE MANAGEMENT  
& STRAIN RELIEF**



**INTEGRATED  
CONTROL PAD**



**BROAD RANGE OF  
HEIGHTS/POSITIONS**

## FEATURES

- Electronically adjusts display height via:
  - » Integrated control pad
  - » Included Remote Control Kit & Bluetooth™ Dongle
- Broad range of heights/positions
- Matches look of existing Fusion Freestanding Solutions
- Two-step assembly
- Storage space with magnetic covers
- Anti-collision technology immediately halts, then reverses motion upon encountering an obstruction to avoid pinching fingers or damaging the display
- Integrated cable management and strain relief helps prevent the cable from disconnecting
- Electric Height Adjust Series includes options for cart ([XPD1U/LPE1U](#)), floor-support ([XFD1U/LFE1U](#)) and wall mount ([XSD1U](#)) applications

**SPECIFICATIONS**

Model	Application	Center of Display to Floor Range	Overall Dimensions Collapsed (H x W x D)	Weight Capacity	Vertical Lift	Mounting Pattern Range	Leveling Adjustment	Storage Space (H x W)
<a href="#">XFD1U</a>	Floor Support	35.96 - 61.55" (913.4 - 1563.4 mm)	45.8 x 65 x 7" (1163 x 165. x 178 mm)	310 lbs. (140.6 kg)	26" (660 mm)	200 x 200 - 860 x 510 mm	Up to 1.5" (38 mm)	8 x 16" (203 x 406 mm)

