



Build out your Chief ceiling-mounted projector installations using this step-by-step selection guide. The guide includes projector mounts and accessories that work seamlessly together to provide a state-of-the-art solution that is flexible and easy to install.

Are you a Chief Certified Partner?

Register at chiefmfg.com/certification

chiefmfg.com

STEP 1 CEILING STRUCTURAL SUPPORT



- CMS115 Ceiling Plate **B W S**
- CMS390/91 Dual Joist Ceiling Plate **B**



- CMA330 Offset Ceiling Plate **B**
- CMA345 Shock-Absorbing Ceiling Plate **B**



- CMA365 Truss/Pipe Ceiling Adapter **B**
- CMA366 Architectural Spanning Adapter **B**



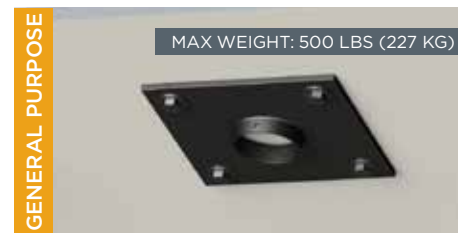
- CMA372 Offset Unistrut Adapter **B**
- CMS110 Ceiling Plate **B S**



- CMA360 I-Beam Clamp **B**



- CMA395 Angled Ceiling Plate **B W**



- CMA101 5" Ceiling Plate **B W S**
- CMA105 4" Ceiling Plate **B**



- CMA110 8" Ceiling Plate **B S**
- CMA115 6" Ceiling Plate **B W S**



- CMS440 Above Tile Ceiling Kit **W**



- CMS445 Replacement Tile Ceiling Kit **W**

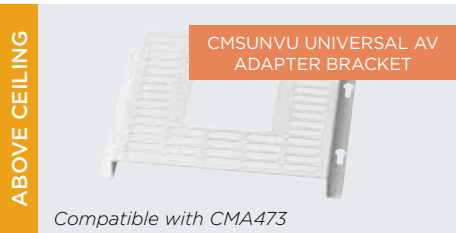


- CMS491C 1' x 2' Plenum Rated Storage Box with Column Drop **W**



- CMS492C 2' x 2' Plenum Rated Storage Box with Column Drop **W**

STORAGE ACCESSORIES



STEP 2 EXTENSION COLUMN



CMS-0xx-0xx Adjustable Column*



CMS-0xx Fixed Column*



ADJUSTABLE COLUMNS

Model	Length	Model	Length
CMS006009	6-9" (152-229 mm)	CMS0507	5-7' (1.5-2.1 m)
CMS009012	9-12" (229-305 mm)	CMS0608	6-8' (1.8-2.4 m)
CMS012018	12-18" (305-457 mm)	CMS0709	7-9' (2.1-2.7 m)
CMS018024	18-24" (457-610 mm)	CMS0810	8-10' (2.4-3.1 m)
CMS0203	2-3' (0.6-0.9 m)	CMS0911	9-11' (2.7-3.4 m)
CMS0305	3-5' (0.9-1.5 m)	CMS1012†	10-12' (3.1-3.7 m)
CMS0406	4-6' (1.2-1.8 m)		

FIXED COLUMNS

Model	Length	Model	Length
CMS003	3" (76 mm)	CMS024	2' (0.6 m)
CMS006	6" (152 mm)	CMS036	3' (0.9 m)
CMS009	9" (229 mm)	CMS048	4' (1.2 m)
CMS012	12" (305 mm)	CMS060	5' (1.5 m)
CMS018	18" (457 mm)	CMS072	6' (1.8 m)

† Cannot ship by UPS due to length.

* All part numbers listed are black. To order alternate colors add an S (silver) or W (white) to the end of the part number.

ACCESSORIES



Cable Management -
CMA274 Cable Cover



Stability Support -
CMA340 Support
Bracket & Cable
Assembly



Aesthetics - CMA640W
Finishing Ring

STEP 3 IN-LINE COLUMN ADAPTER

COUPLER

CMA270 1-1/2" NPT Coupler **B** **W** **S**

CMA152 1-1/2" NPT Coupler w/Port **B**

Max Weight 500 lbs (227 kg)

SWIVEL

CMA351 Swivel Adapter **B**

Max Weight 500 lbs (227 kg)

ELECTRICAL

CMA504 Outlet Coupler **B**

Max Weight 500 lbs (227 kg)

STORAGE

CMA160 Electrical Storage Enclosure **B**

Max Weight 250 lbs (113 kg)

VIBRATION

CMA347 Vibration Isolator **B**

Max Weight 35 lbs (16 kg)

EXTENSION

CMSH3 Column Height Adjust (3") **B** **S**

Max Weight 500 lbs (227 kg)

STEP 4 EXTENSION COLUMN (SEE STEP 2)

STEP 5 PROJECTOR MOUNTING SOLUTION

RPA™ ELITE

MAX WEIGHT: 50 LBS (23 KG)

MAX WEIGHT: 25 LBS (11.3 KG)



RPMxxxx/U Projector Mount **B** **B** **W** **S**

RSMxxxx/U Projector Mount **B** **B** **W** **S**

RPA™ SERIES

MAX WEIGHT: 50 LBS (23 KG)

MAX WEIGHT: 25 LBS (11.3 KG)



RPAxxxx/U Projector Mount **B** **B** **W** **S**

RSAxxxx/U Projector Mount **B** **B** **W** **S**

HEAVY DUTY

MAX WEIGHT: 250 LBS (113 KG)



VCMxxxx/U Projector Mount **B**

STEP 6 SECURITY ACCESSORIES

PROJECTOR GUARD



PG2 Small Projector Guard **B** **W**

PG1 Large Projector Guard **B** **W**

PG3 X-Large Projector Guard **B** **W**


PROJECTOR LOCK



PL2A/B/C RPA Small Projector Lock **B**

PL1A/B/C RPA Large Projector Lock **B**

ACCESSORIES



Cable - LC1™
Cable Lock

BASIC



ALL-POINTS SECURITY

Exclusive steel-into-steel locking hardware at all connection points to protect against theft.

RPA™ SERIES



MAX WEIGHT: 50 LBS (23 KG)

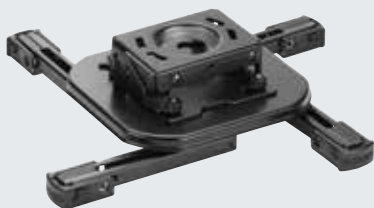
RPAXxxx Custom Projector Mount

B

RPAU Universal Projector Mount

B W S

RPA™ MINI SERIES



MAX WEIGHT: 25 LBS (11.3 KG)

RSAXxxx Custom Mini Projector Mount

B

RSAU Universal Mini Projector Mount

B W S

ACCESSORIES



CMS115 Ceiling Plate

B W S

CMS0xx0xx Adjustable Extension Column

B W S

CMA152 1-1/2" to 1-1/2" NPT Coupler

B S

INTERMEDIATE



KEYED SECURITY

Keyed locking options (A/B/C/D) combined with **All-Points Security** steel-into-steel locking hardware at all connection points to protect against theft.

PL SERIES*



PL1(A/B/C) Projector Lock*

B

PL2(A/B/C) Mini Projector Lock*

B

*For use with RPAxxxx Series

RPA™ ELITE



MAX WEIGHT: 50 LBS (23 KG)

RPM(A/B/C/D)xxxx Custom Projector Mount

B

RPM(A/B/C)U Universal Projector Mount

B W S

RPA™ MINI ELITE



MAX WEIGHT: 25 LBS (11.3 KG)

RSM(A/B/C/D)xxxx Custom Mini Projector Mount

B

RSM(A/B/C/D)U Universal Mini Projector Mount

B W S

ALL-IN-ONE SECURITY

Keyed locking options combined with **All-Points Security** steel-into-steel locking hardware at all connection points to protect against theft (no exposed projector fasteners).

RPA™ SECURITY SERIES



MAX WEIGHT: 50 LBS (23 KG)

RPA(A/B/C/D)1 All-In-One Universal Security



ELITE SECURITY SERIES



MAX WEIGHT: 50 LBS (23 KG)

RPM(A/B/C/D)1 All-In-One Universal Security



ACCESSORIES



PG1A	Max Equipment Size (HxWxD)	Colors
Large Projector Guard	7.5 x 20 x 20.4" (191 x 508 x 518 mm)	B W



PG2A	Max Equipment Size (HxWxD)	Colors
Small Projector Guard	7.5 x 16 x 16" (191 x 406 x 406 mm)	B W

ACCESSORIES



PG3A	Max Equipment Size (HxWxD)	Colors
Extra Large Projector Guard	11.4 x 25 x 24.9" (288 x 635 x 633 mm)	B W



SA1
Security Anchor



HC1	Includes
Heavy-Duty Cable System	SA1, cable, padlock, security pads, super glue



LC1	Includes
Security Cable Lock Kit	coiled cable, padlock, security pads, super glue



PL4	Includes
Projector Security Cable Lock	cable, security pad, lock housing



PMSC	Includes
Security Cable Lock	two cable and lock sets



SEC2	Compatibility
Security Cable Kit for SLBU	RSMA and RSA Mounts and RPA and RPA Elite Security Series



A BRAND OF MILESTONE AV TECHNOLOGIES ■ www.chiefmfg.com

USA P 800.582.6480 / +1.952.225.6000 ■ F 877.894.6918 / +1.952.894.6918 ■ chief@chiefmfg.com

In British Columbia, Milestone AV Technologies ULC carries on business as MAVT Milestone AV Technologies ULC.

©2013 Milestone AV Technologies, a Duchossois Group Company. 1000761 01/15 Chief is a registered trademark of Milestone AV Technologies. All other brand names or marks are used for identification purposes and are trademarks of their respective owners. All patents are protected under existing designations. Other patents pending.